



Install Guide





Installation Instructions for SUPER-SLIDE Liners

Thank you for your purchase of a Super-Slide Lining System from Horn Plastics Inc. We realize there are many other options when it comes to liners, and that is why we sincerely appreciate that you put your trust and confidence in us to supply you with your liner system. We want you to achieve the highest possible return on investment. Yes, your Super-Slide liner is an investment. You will be able to haul more loads/day, eliminate carry-back, and save wear and tear on your equipment. A very crucial step in achieving max return starts with proper installation and maintenance of your liner system. If you have any questions during or after the installation, please call and one of our service agents will gladly answer any questions you may have or help troubleshoot any issues that come up.

Tim Horn

Vice President
Horn Plastics, Inc.

Contact

800.373.7448
sales@superslide.com

Supplies

- (4) Ratchet Cargo Jacks
- (4) Come-A-Longs
- (8) C-Clamp Vise Grips
- Circular Saw
- Jig Saw/Sawz-All
- Drill
- Forklift or Lifting Device
- 7/16" Socket or Wrench
- Tape Measure
- Chalk Line Marker
- Permanent Marker
- Utility Knife
- 1 3/8" Spade Bit
- Cardboard (larger than 4' x 4')
- (16) 3/8" x 2" Elevator bolts with lock washer and nut*
- 13/32" Drill Bit*
- 17/64" Drill Bit*
- T-40 Torx Bit*
- 5/16" Torx Bolts*
- Hold Down Strap* (only for 1/4" and 3/16" liners)
- (4-6) Tubes of Silicone*
- (2) Carriage Bolts with double nut or Lock nuts* (only for 1/4" and 3/16" liners)
- 1/4 Hex Bolts, Lock Washers, and Nuts*
- Bumper Sticker*

*Included in Horn Plastics Hardware Kit

Prior to Installation

****Make sure to roll out liner, flip over, and flatten the night before installation.****

1. Any uneven high areas could cause wear spots. Fasten scrap plastic, plywood, aluminum or steel in any low areas in the trailer.

2. Unroll the liner with "This Side Up" sticker facing up.

HMW Blue Stripe/Black Utility: Unroll and flip over; the natural curve of the liner needs to be down.

UHMW Blue Iron/Yellow Quartz/Black Repro: Unroll and do not flip; the shiny side needs to be face up.

UHMW Red Hot: Tail kit needs to be at the rear of truck floor with the steel plate facing down.

3. Measure the length of the inside of the trailer and cut the liner short to allow for liner expansion using the Cold Load or Hot Asphalt formula.

Cold Load: Length of body ÷ 10

Example: 20 foot liner will need 2" cut off
(20 ÷ 10 = 2)

Hot Asphalt: Length of body ÷ 4

Example: 20 foot liner will need 5" cut off
(20 ÷ 4 = 5)

Cut to length after placed inside truck.



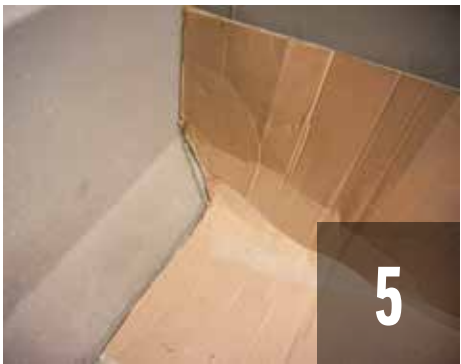
4. Mark the center of the liner and the center of the trailer body on both the front and rear. These will be used later in step 13.

5. Measure the doghouse.

6. Use the sheet of cardboard and knife to create the front cut out as accurately as possible.

7. Trace the doghouse and front cut out on to liner.

8. Before cutting the doghouse, drill pilot holes at the rear corners of the doghouse. This will prevent a natural tear starting at the corners from over cutting. Using a circular saw or jigsaw cut the doghouse out of the liner.



Scoring the Liner

****Only for 3/8" or thicker liners****

Skip to step 13 for everything else.

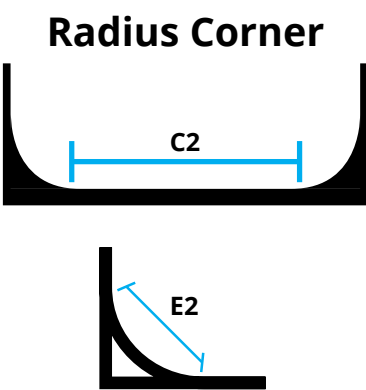
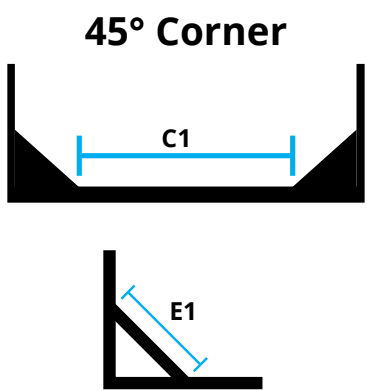
9. Set the circular saw depth and test the depth on a scrap piece of plastic.

****Leave 3/16" of liner remaining****

10. Score 3/8" and 1/2" thick liners; **the score marks must be facing up.**

Measure cleanout width: E1 or E2

Measure distance between cleanouts: C1 or C2

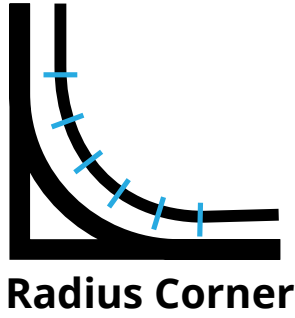
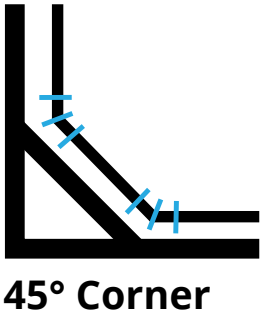
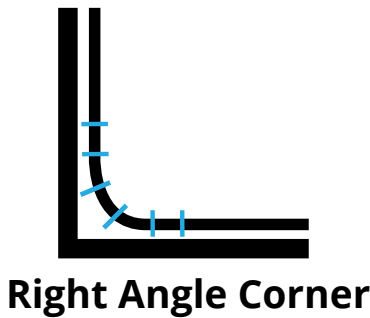


11. Mark the measurements and snap chalk lines full length of liner.

****Be careful not to score through the liner****



Type of Cleanout	Number of Scores	Width of Score	Space between Scores
Right Angle Corners	6	1/8" wide	1/8" apart
45° Corners	2 sets of 3	1/8" wide	1/8" apart
Radius Corners	6	1/8" wide	6 scores equally spaced between beginning and end of radius.



12. Set the scoring guide to marks and score liner the full length. Repeat until all marks are scored.



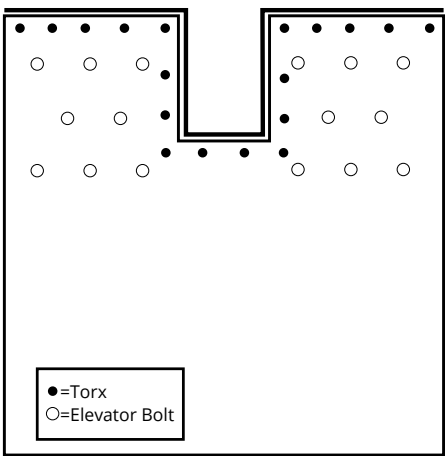
Installing Liner

13. Form the liner into a U-shape lengthwise by using c-clamps and come-a-longs. Lift the U-shaped liner into the box using a forklift or a lifting device.

14. Match up the center marks of the trailer body with the center marks of the liner. At the front and back, insert a 5/16" torx on the center marks, to hold the liner in place while fastening. If liner is scored, the self tapper in the back isn't necessary. The torx will need to be removed at step 21 at the end of installation.



15. Remove c-clamps and come-a-longs. Work the liner down in the front corners, middle, and rear using the ratcheting cargo jacks, The longer the body, the more jacks will be needed. When the liner in the corners is less than 1" from touching the floor, install six to eight 3/8" x 2" elevator bolts with a lock washer and nut on each side of the doghouse. Use the spade bit to counter bore the plastic so elevator bolts are flush with the plastic.



16. Measure up 2 1/2" from top edge of the liner with all **Super-Slide** liners.



17. Snap a chalk line, front to back, on mark for top placement of cover strip.

18. Attach the cover strips by welding or using huck rivets, self tapping screws, or other fasteners. It is best to stay within the support beams to conceal the fasteners on the outside of the body.



19. Place 2 torx in front side wall 8" apart and 3" in from front. Also add a torx in center of cleanout 3" in from front. If no support beam is located here, replace torx with hex bolt.



20. Place silicone caulking on the section of the cover strip that will fit against the side wall of the body.

****Verify you have access underneath to put nuts on bolts before drilling holes for hold down strap.****

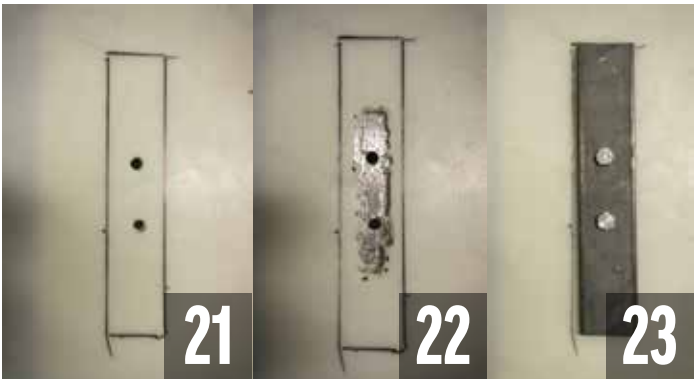


21. Install a hold down strap on 3/16" and 1/4" liners within 5' of the rear of the liner. Mark the holes and drill through the plastic and trailer.

22. Using a jig saw, cut a 3/4" wide x 6" long slit through the plastic connecting the two bolt holes.

23. Tighten the carriage bolts using a double nut or nyloc nut so the bolts hold the liner down but also allow the liner to move underneath the hold down strap.

****DO NOT OVER-TIGHTEN****



24. Remove self tappers from step 13 and fill the holes with silicone.

- DUMP TRUCK/TRAILER BED LINERS
- LIVE BOTTOM TRAILERS
- OFF-ROAD AND ARTICULATED TRUCKS
- CHUTE, BIN AND HOPPER LINERS
- CONVEYOR LINERS AND SKIRTING
- SPREADERS
- MACHINING (CNC ROUTER, LATHES, MILLS)
- PLASTIC WELDING & REPAIR

APPLICATIONS

PRODUCT LINE

- BLUE STRIPE®
- BLUE IRON®
- YELLOW QUARTZ®
- RED HOT®
- UHMW
- HMW
- HMW BLACK UTILITY

REFER A FRIEND

**\$100 OFF
YOUR INSTALL**

OR

**\$50 OFF
A PURCHASE OF
\$750 OR MORE**

NAME: _____

CUSTOMER NUMBER: _____

FRIEND'S NAME: _____

HPI
HORN PLASTICS INC.

HPI

HORN PLASTICS INC.



712 38th St. N, Unit C
Fargo, ND 58102

7293 W Airway Court, Suite A
Boise, ID 83709

Contact

800-373-7448
sales@superslide.com